

NESS



Flame retardant/
Ignifugo

Internal structure: The structure of the body is in solid wood with expanded polyurethane foam.

Struttura interna: *Struttura della scocca in legno massello con imbottitura in poliuretano espanso a quote differenziate.*

Type of foam: Polyurethane foam with density of 40 kg/mc.
It's fireproof based on:
• Italian class 11M: UNI9175/2010
• CRIB 5 (only on request and with minimum lots)

Imbottitura: *Poliuretano espanso di densità 40 kg/mc.
È ignifugo secondo le seguenti normative:
• Classe 11M italiana: UNI9175/2010
• CRIB 5 (solo su richiesta e con lotti minimi)*

Homologation: **Approved according to the following regulations in Italian Class 11M (UNI9175/2010) with certain upholstery materials (see sheet of fabric's technical sheet).**

Omologazione: **Omologato secondo le seguenti normative in Classe 11M italiana (UNI9175/2010) con determinati rivestimenti (vedi scheda rivestimenti)**

Base: Metal varnished frame

Basamento: *Basamento in metallo verniciato*

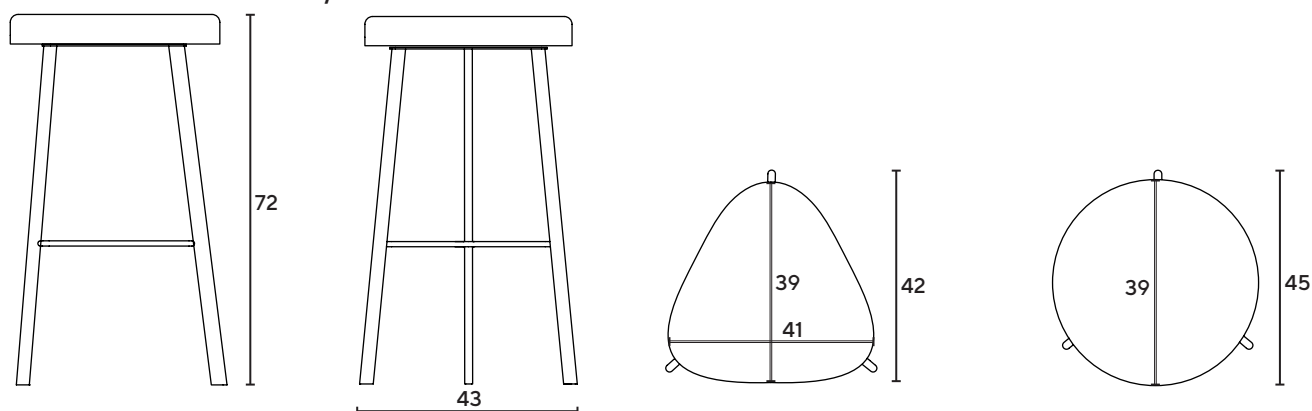
**Required fabric/
Consumo tessuto:** 0,70 m. (h.1,40 m)

Volume 0.15 mc

Weight/Peso: 5,50 kg



• TECHNICAL DRAWING/ DISEGNI TECNICI



DIMENSIONS/DIMENSIONI:

NESS ROUNDED/TONDO: W/L. 43 - D/Prof. 45 - HT. 72 cm

NESS TRIANGULAR/TRIANGOLARE: W/L. 43 - D/Prof. 42 - HT. 72 cm

Dimensions have a tolerance of ± 2 cm.

Le dimensioni hanno una tolleranza di ± 2 cm

• USE AND MAINTENANCE /USO E MANUTENZIONE

- The product is intended for use in indoor environments.
- Avoid the use of solvents and abrasive
- Clean with soft cloths and neutral detergents. Treat stains promptly without rubbing, but dabbing.
- Regarding the maintenance and information related to the fabric, please contact directly the supplier since it is in COM.
- For further information, please see the supplier card.
- *Il prodotto è destinato per l'utilizzo in ambienti all'interno.*
- *Evitare l'impiego di solventi ed abrasivi.*
- *Pulire con panni morbidi e detergenti neutri. Trattare le macchie tempestivamente senza stronfinare ma tamponando.*
- *Per quanto riguarda la manutenzione e le informazioni relative al tessuto essendo in COM contattare direttamente il fornitore.*
- *Per maggiori informazioni vedi schede vostro fornitore*

• FABRIC'S TECHNICAL SHEET/SCHEDA RIVESTIMENTI

- FABRICS/TESSUTI



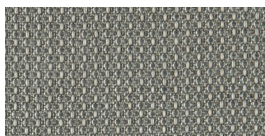
MANAGUA

*Flame retardancy/
Resistenza al fuoco:*
11M - UNI 9175;
EN 1021 part 1/2;
BS 5852 crib 5;
NFPA 260 Class 1;
California TB 117:2013;
IMO MED - FTP Code 307
part 8.



MORELIA

*Flame retardancy/
Resistenza al fuoco:*
11M - UNI 9175;
EN 1021 part 1/2;
BS 5852 crib 5;
NF D 60 013 (AM18);
NFPA 260 Class 1;
California TB 117-2013;
IMO FTP Code 307 part 8.



IGUAZU

*Flame retardancy/
Resistenza al fuoco:*
11M - UNI 9175;
EN 1021 part: 14 part 1/2;
BS 5852:06 crib 5;
NF D 60-013:06 - AM 18;
California TB 117:2013;
IMO MED - Ftp 307 part 8.



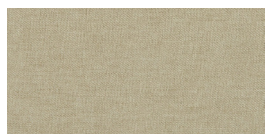
TURMERO

*Flame retardancy/
Resistenza al fuoco:*
11M - UNI 9175;
EN 1021 part 1/2;
BS 5852 crib 5;
NF-D 60-013 (AM 18);
NFPA 260 Class 1;
California TB 117:2013;
IMO MED 3.20 - FTP Code
307 part 8



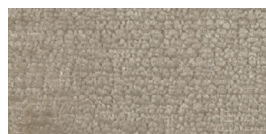
TORTUGA

*Flame retardancy/
Resistenza al fuoco:*
11M - UNI 9175;
EN 1021 part 1/2;
NF-D 60 013 (AM 18);
BS 5852 crib 5;
NFPA 260 Class 1;
California TB 117-2013;
IMO MED 3.20 - FTP Code
307 part 8.



CALLAS

*Flame retardancy/
Resistenza al fuoco:*
11M - UNI 9175;
EN 1021 part 1/2;
BS 5852 1/2;
CAL TB 117;
NFPA 260;
IMO 2010 FTP part 8



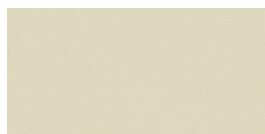
PLEASE

*Flame retardancy/
Resistenza al fuoco:*
11M - UNI 9175;
EN 1021 part 1/2;
BS 5852, 1/2;
CAL TB 117
NFPA 260
IMO 2010 FTP part 8



VOLT

*Flame retardancy/
Resistenza al fuoco:*
11M - UNI 9175;
EN 1021 part 1/2;
BS 5852 1/2;
CAL TB 117
NFPA 260
IMO 2010 FTP part 8



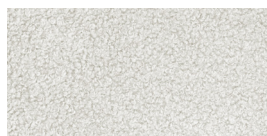
ARCADIA

*Flame retardancy/
Resistenza al fuoco:*
11M - UNI 9175;
EN 1021 part 1 and 2;
Idrorepellente



HORIZON

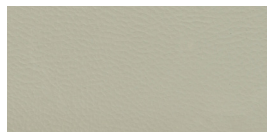
*Flame retardancy/
Resistenza al fuoco:*
11M - UNI 9175;
IMO (boating furn.)



MACACO

*Flame retardancy/
Resistenza al fuoco:*
11M - UNI 9175;

- ECOLEATHER/ECOPELLE



CALLAO

*Flame retardancy/
Resistenza al fuoco:*
11M - UNI 9175;
EN 1021 part 1/2;
BS 5852 part 1;
NF D-60 013 (AM. 18);
NFPA 260 Class 1;
California TB 117:2013;
IMO MED - Ftp 307 part 8;
ÖNOM B 3825

See upholstery colors in Design Work Box
Vedi colori rivestimenti in Design Work Box